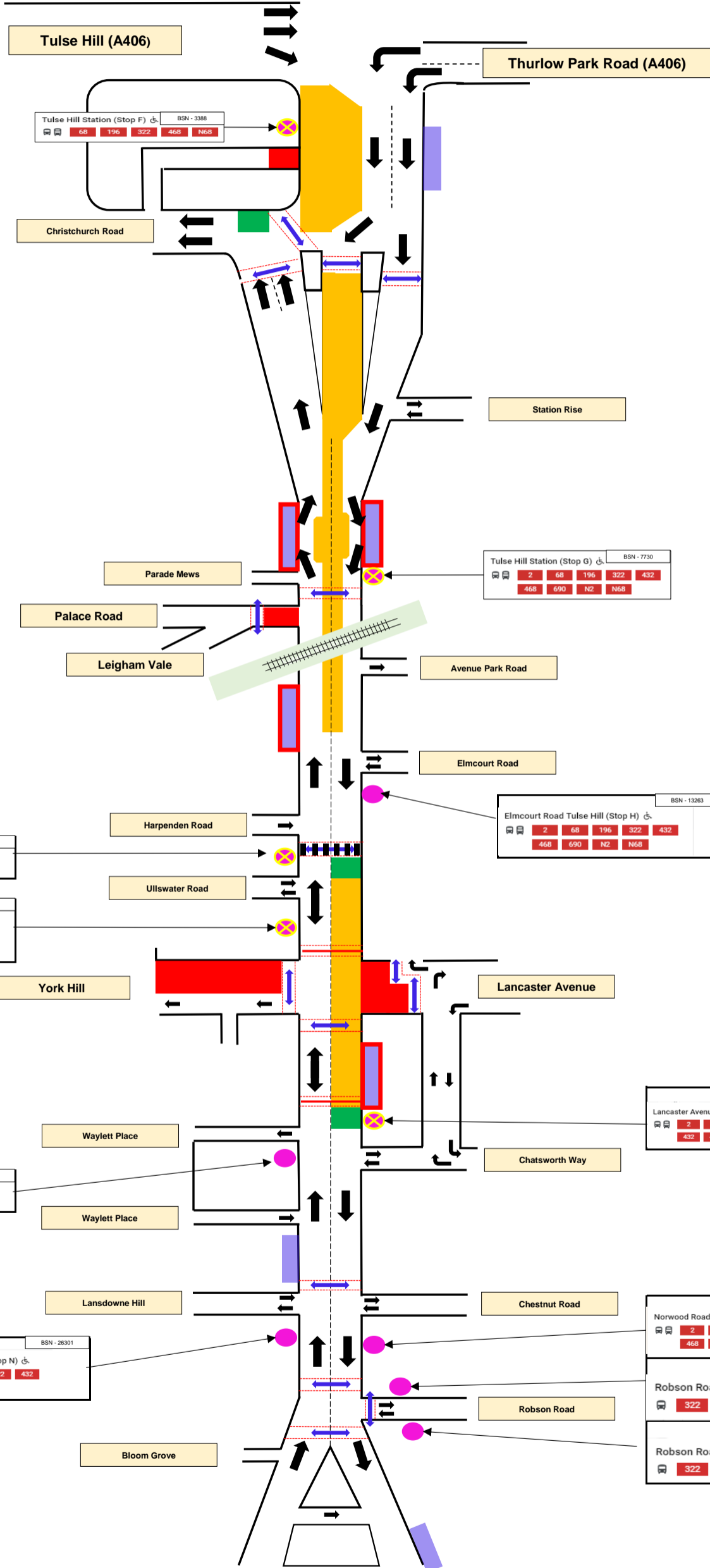
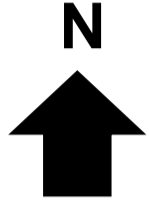


Norwood Road - Phase 2 & 1A



KEY:

- Work Area
- Existing Available Loading/Parking (subject to LB Lambeth & TfL restrictions).
- Existing Parking Unavailable due to Work Area
- Road Closed for Deliveries for Businesses, Work Storage Area & Office/Welfare Units
- Designated Refuse Collection Points
- Existing/Temporary Crossing Points
- Closed Crossing Points
- Pedestrian Routes
- Bus Stop Open
- Bus Stop Closed
- Existing Zebra Crossing

Vertical line